

Specification

Glitz

052325-33

Application

Walls, for indoor use in environmentally controlled spaces

Ground

Prisma!

Characteristics

CONTENT: Embossed vinyl face with laminated fabric backing

BACKING: Poly-cotton woven

WIDTH: 51"

REPEAT: none

HANGING INSTRUCTIONS: Straight match

WEIGHT: 20 oz/lineal yd

MAINTENANCE: W - Clean with water and mild soap

Performance

FEDERAL SPECIFICATIONS: Meets or exceeds CCC-408-D Type II Class A

FLAMMABILITY: ASTM-E84 Tunnel Test, Class A
NFPA Life Safety Code 101, Class A
Meets or exceeds requirements for flame spread, smoke development and flashover
EU Class Flame (EN151020, CLASS B, s2
BS476 Parts 6&7 Passed all requirements
CAN/ULC-S102 Passed all requirements

SUSTAINABILITY: NSF-342 - Certified for Silver compliance for all 20 oz wallcovering constructions
Low VOC – Meets California CDPH Standard for Schools and Offices when tested to CA 01350
Contributes to LEED v4
Meets or exceeds EU Toxicity standard EN 12149 A,B,C for heavy metals and formaldehyde
Phthalate free formulation
Prop 65 compliant
Manufactured without the use of Brominated flame retardants
For non-woven backed constructions –
11% post-consumer content in total product – using recycled polyester, cellulose
100% of backing fiber content is post-consumer fiber

MOLD/MILDEW: ASTM-G21 Specifications, passed all requirements

INDOOR AIR QUALITY: Manufactured with Low VOC Vinyl
Meets California CDPH Standard for Schools and Offices
Tested per CA 01350

WARRANTY: 3 years against manufacturing defects

Specification

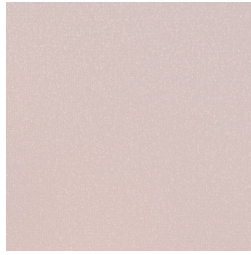
Glitz

052325-33

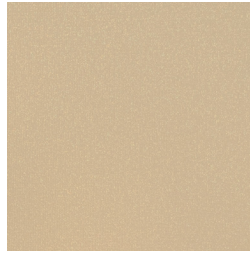
AiNO®



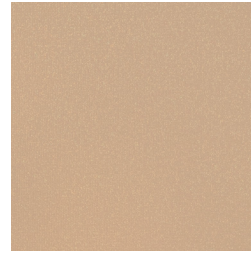
33-01 Off White



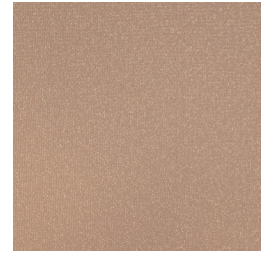
33-02 Light Pink



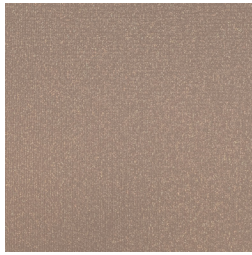
33-03 Golden



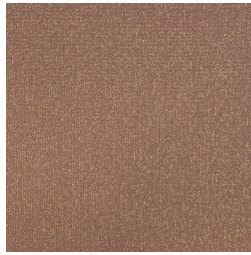
33-04 Sepia



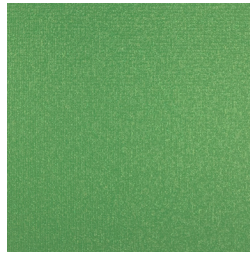
33-05 Copper



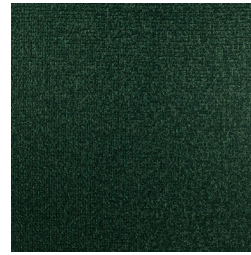
33-06 Russet



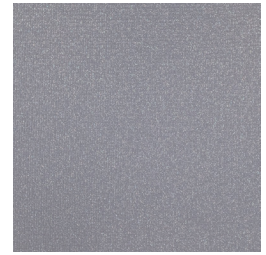
33-07 Gingerbread



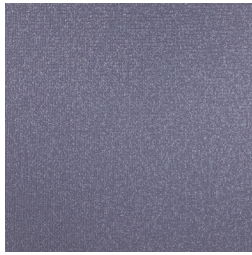
33-08 Neon Green



33-09 Emerald Green



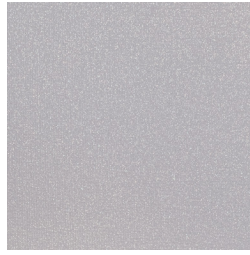
33-10 Periwinkle



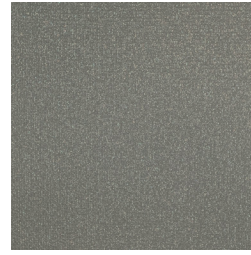
33-11 Lilac Blue



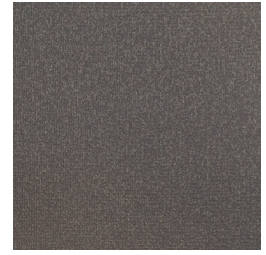
33-12 Peacock Blue



33-13 Silver



33-14 Pewter



33-15 Iron



33-16 Obsidian



Rendering of Glitz in 33-05 in Copper